

Mailing Address:  
 Hamilton City Hall  
 71 Main Street West, 6<sup>th</sup> Floor  
 Hamilton, ON L8P 4Y5  
 www.hamilton.ca

Planning and Economic Development Department  
 Growth Management Division  
 Physical Address: 71 Main Street West, 6<sup>th</sup> Floor  
 Phone: 905-546-2424 Ext.4237 Fax: 905-546-4202  
 Paul.Toffoletti@hamilton.ca

# Hamilton

July 5, 2016.

FILE: 25T-200717

Angros Enterprises Ltd.  
 832 West 5<sup>th</sup> Street  
 Hamilton, ON, L9C 3R5

A.J. Clarke Ltd.  
 c/o Steve Fraser  
 25 Main Street West, Suite 300  
 Hamilton, ON, L8P 1H1

**NOTICE OF MUNICIPAL ADDRESSES  
 FOR REGISTERED PLAN 62M-1228 "FONTANA GARDENS PHASE 3".**

Attached is a table of the municipal addresses that have been assigned, along with a copy of the above Registered Plan for this subdivision located in the former boundaries of the City of Hamilton.

**THE FOLLOWING MUNICIPAL ADDRESSES HAS BEEN RETIRED AND SHOULD NO LONGER BE USED:**

**772, 794 and 802 West 5<sup>th</sup> Street**  
 Roll Number 251808097105000; Teranet PIN 169451595

**810 West 5<sup>th</sup> Street**  
 Roll Number 251808097105060; Teranet PIN 169451595

**NOTE: BUILDERS ARE REMINDED OF THEIR OBLIGATION TO INSTALL ADDRESS NUMBERS ON ALL NEW DWELLINGS.**

Please update your records accordingly. Should you have any questions regarding the above, please contact Paul Toffoletti at 905-546-2424 Ext. 4348.

Jason Thompson, MCIP, RPP  
 Senior Project Manager, Growth Planning Section,  
 Growth Management Division, Planning and Economic Development Department.

c.c.

Electrical Safety Authority  
 MPAC  
 City of Hamilton  
 SourceCable  
 Horizon Utilities  
 Canada Post  
 Angus GeoSolutions Inc.  
 Blue Line Taxi

Union Gas  
 Fire and Police  
 Bell Canada Eng.  
 Bell Street Guide  
 Bell Canada (911)  
 Map Mobility  
 DMTI Spatial  
 DARTS

Ham.-Went. School Boards  
 (Public & Separate)  
 Canada Mortgage and Housing Corp.  
 Hamilton CACC Ambulance Dispatch  
 Hamilton-Burlington District Real Estate  
 Canadian Cartographic Corp.  
 Hamilton Automobile Club  
 Telus

62M-1228	FONTANA GARDENS PHASE 3 25T-200717
Lot	Address
1	97 SPRINGVALLEY CRESCENT
2	99 SPRINGVALLEY CRESCENT
3	101 SPRINGVALLEY CRESCENT
4	103 SPRINGVALLEY CRESCENT
5	105 SPRINGVALLEY CRESCENT
6	107 SPRINGVALLEY CRESCENT
7	109 SPRINGVALLEY CRESCENT
8	111 SPRINGVALLEY CRESCENT
9	3 SAINT ANTHONY PLACE
10	7 SAINT ANTHONY PLACE
11	11 SAINT ANTHONY PLACE
12	15 SAINT ANTHONY PLACE
13	20 SAINT ANTHONY PLACE
14	16 SAINT ANTHONY PLACE
15	12 SAINT ANTHONY PLACE
16	8 SAINT ANTHONY PLACE
17	4 SAINT ANTHONY PLACE
18	156 SPRINGVALLEY CRESCENT
19	154 SPRINGVALLEY CRESCENT
20	152 SPRINGVALLEY CRESCENT
21	150 SPRINGVALLEY CRESCENT
22	148 SPRINGVALLEY CRESCENT
23	146 SPRINGVALLEY CRESCENT
24	144 SPRINGVALLEY CRESCENT
25	142 SPRINGVALLEY CRESCENT
26	140 SPRINGVALLEY CRESCENT
27	138 SPRINGVALLEY CRESCENT
28	136 SPRINGVALLEY CRESCENT
29	134 SPRINGVALLEY CRESCENT
30	132 SPRINGVALLEY CRESCENT
31	130 SPRINGVALLEY CRESCENT
32	128 SPRINGVALLEY CRESCENT
33	126 SPRINGVALLEY CRESCENT
34	100 SPRINGVALLEY CRESCENT
35	98 SPRINGVALLEY CRESCENT
36	120 SPRINGVALLEY CRESCENT – Apartment Bldg.

MACLAUNDERS STREET  
62R - 11753

CLOSED BY JUDGE'S ORDER  
REC'D. AS INST. NO. 301930 A.B.

PART 5 PLAN 62R-11788

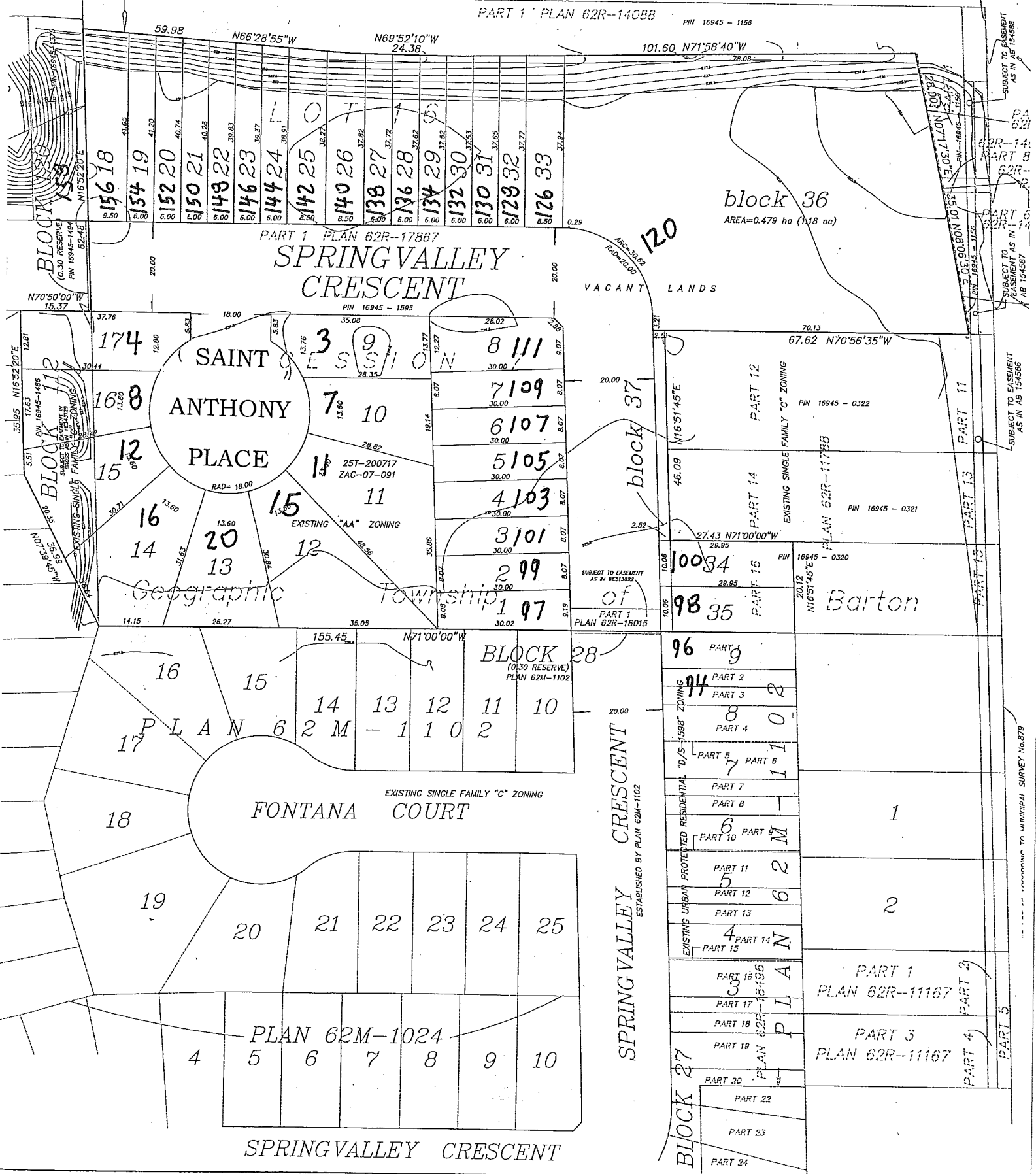
# LINCOLN M. ALEXANDER PARKWAY

## FONTANA GARDENS PHASE 3 - 62M-1228

BY-LAW No. R97-077, REG'D AS LT 473761

PART 1 PLAN 62R-14088

PIN 16945 - 1156



block 36  
AREA=0.479 ha (1.18 ac)

PART 1 PLAN 62R-17867  
**SPRING VALLEY CRESCENT**

**SAINT ANTHONY PLACE**  
RAD=18.00

BLOCK 28  
(0.30 RESERVE)  
PLAN 62M-1102

**SPRING VALLEY CRESCENT**  
ESTABLISHED BY PLAN 62M-1102

**SPRING VALLEY CRESCENT**

SUBJECT TO EASEMENT  
AS IN AB 154588

PART 8  
62R-141

PART 5  
62R-141

SUBJECT TO EASEMENT  
AS IN AB 154586

COMMUNITY MUNICIPAL SURVEY No. 879

BLOCK 33  
(0.30 RESERVE)  
PIN 16945-1491  
62-48  
N16°52'20"E

BLOCK 12  
EXISTING SINGLE FAMILY "C" ZONING  
N10°55'56"E  
61°56'56"

block 37  
block 120  
block 27  
PART 1  
PART 2  
PART 3  
PART 4  
PART 5  
PART 6  
PART 7  
PART 8  
PART 9  
PART 10  
PART 11  
PART 12  
PART 13  
PART 14  
PART 15  
PART 16  
PART 17  
PART 18  
PART 19  
PART 20  
PART 21  
PART 22  
PART 23  
PART 24  
EXISTING SINGLE FAMILY "C" ZONING  
EXISTING URBAN PROTECTED RESIDENTIAL "D/S-1598" ZONING  
PLAN 62R-11167  
PLAN 62R-11167