



Mailing Address:  
 Hamilton City Hall  
 71 Main Street West, 6<sup>th</sup> Floor  
 Hamilton, ON L8P 4Y5  
 www.hamilton.ca

Planning and Economic Development Department  
 Growth Management Division  
 Physical Address: 71 Main Street West, 5<sup>th</sup> Floor  
 Phone: 905-546-2424 Ext.4348 Fax: 905-546-4202  
 paul.toffoletti@hamilton.ca

Hamilton

October 4, 2016

FILE: 25T-201109

John Bruce Robinson Construction  
 2520 Highway 56, PO Box 39  
 Binbrook, ON L0R 1C0

A.J. Clarke Ltd.  
 c/o Steve Fraser  
 25 Main Street West, Suite 300  
 Hamilton, ON, L8P 1H1

**NOTICE OF MUNICIPAL NUMBERS**

**FOR REGISTERED PLAN 62M-1233 "BINBROOK HEIGHTS PHASE 1"**

Attached is a table of the municipal addresses that have been assigned, along with a copy of the above Registered Plan for this subdivision located in the former Township of Glanbrook.

Please update your records accordingly. Should you have any questions regarding the above, please contact Paul Toffoletti at 905-546-2424 Ext.4348.



Jason Thompson, MCIP, RPP  
 Senior Project Manager, Legislative Approvals,  
 Planning Division, Planning and Economic Development Department.

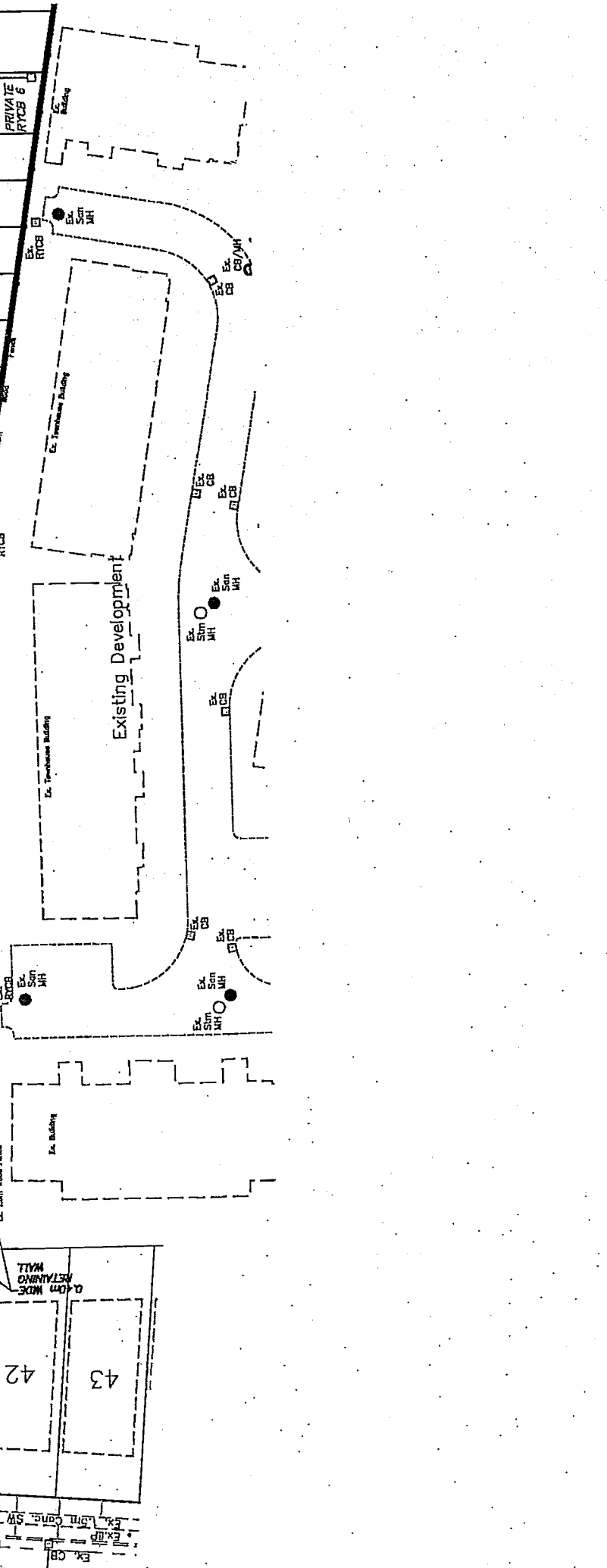
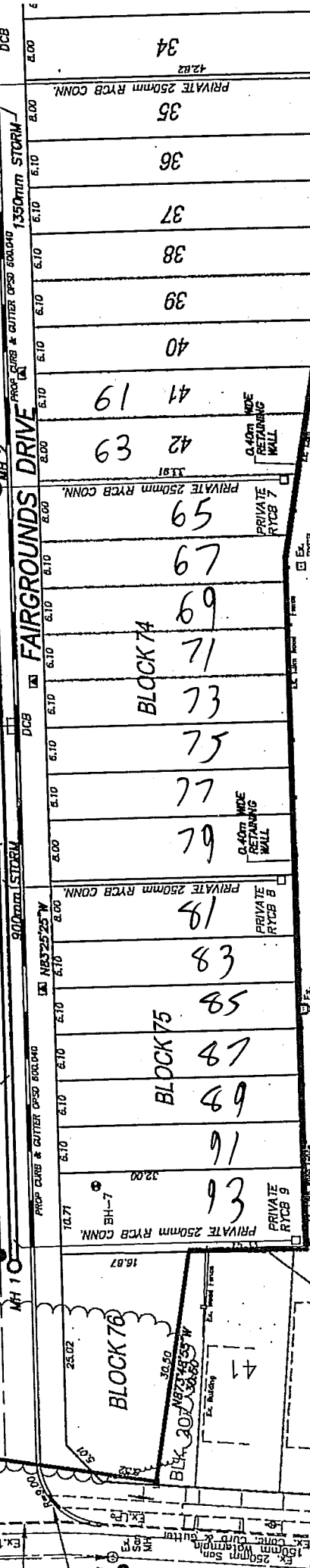
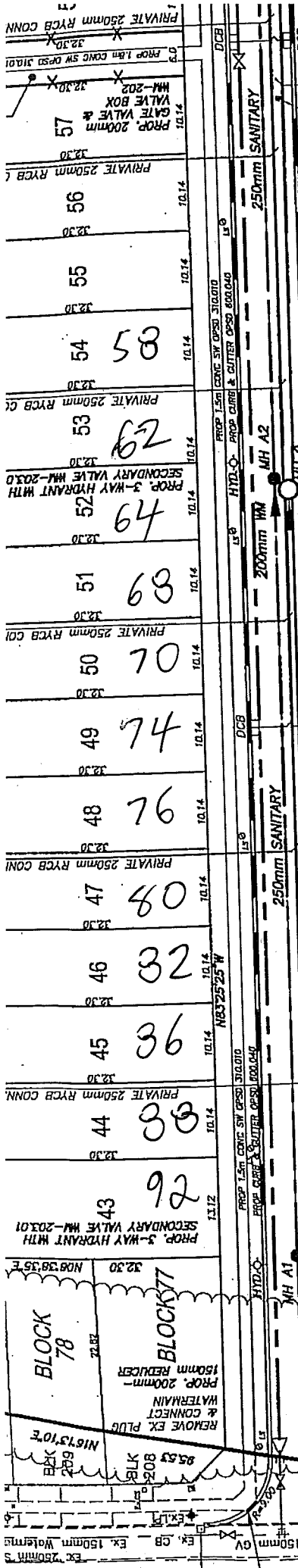
c.c.

Electrical Safety Authority  
 MPAC  
 City of Hamilton  
 Rogers Cable  
 Hydro One  
 Canada Post  
 Angus GeoSolutions Inc.  
 Blue Line Taxi

Union Gas  
 Fire and Police  
 Bell Canada Eng.  
 Bell Street Guide  
 Bell Canada (911)  
 Map Mobility  
 DMTI Spatial  
 DARTS

Ham.-Went. School Boards  
 (Public & Separate)  
 Canada Mortgage and Housing Corp.  
 Hamilton CACC Ambulance Dispatch  
 Hamilton-Burlington District Real Estate  
 Canadian Cartographic Corp.  
 Hamilton Automobile Club  
 Telus





62M-1233		Binbrook Heights Phase 1 201109	
Lot No.	Address	Lot No.	Address
1	38 DAW AVENUE	59	40 FAIRGROUNDS DRIVE
2	34 DAW AVENUE	60	38 FAIRGROUNDS DRIVE
3	30 DAW AVENUE	61	34 FAIRGROUNDS DRIVE
4	26 DAW AVENUE	62	32 FAIRGROUNDS DRIVE
5	22 DAW AVENUE	63	28 FAIRGROUNDS DRIVE
6	18 DAW AVENUE	64	26 FAIRGROUNDS DRIVE
7	14 DAW AVENUE	65	22 FAIRGROUNDS DRIVE
8	10 DAW AVENUE	66	20 FAIRGROUNDS DRIVE
9	6 DAW AVENUE	67	16 FAIRGROUNDS DRIVE
10	2 DAW AVENUE	68	14 FAIRGROUNDS DRIVE
11	1 FAIRGROUNDS DRIVE	69	10 FAIRGROUNDS DRIVE
12	3 FAIRGROUNDS DRIVE	70	8 FAIRGROUNDS DRIVE
13	5 FAIRGROUNDS DRIVE	71	4 FAIRGROUNDS DRIVE
14	7 FAIRGROUNDS DRIVE	72	2 FAIRGROUNDS DRIVE
15	9 FAIRGROUNDS DRIVE	BLK 73	139 FALL FAIR WAY
16	11 FAIRGROUNDS DRIVE		
17	13 FAIRGROUNDS DRIVE	BLK 74	65 FAIRGROUNDS DRIVE
18	15 FAIRGROUNDS DRIVE	BLK 74	67 FAIRGROUNDS DRIVE
19	17 FAIRGROUNDS DRIVE	BLK 74	69 FAIRGROUNDS DRIVE
20	19 FAIRGROUNDS DRIVE	BLK 74	71 FAIRGROUNDS DRIVE
21	21 FAIRGROUNDS DRIVE	BLK 74	73 FAIRGROUNDS DRIVE
22	23 FAIRGROUNDS DRIVE	BLK 74	75 FAIRGROUNDS DRIVE
23	25 FAIRGROUNDS DRIVE	BLK 74	77 FAIRGROUNDS DRIVE
24	27 FAIRGROUNDS DRIVE	BLK 74	79 FAIRGROUNDS DRIVE
25	29 FAIRGROUNDS DRIVE		
26	31 FAIRGROUNDS DRIVE	BLK 75	81 FAIRGROUNDS DRIVE
27	33 FAIRGROUNDS DRIVE	BLK 75	83 FAIRGROUNDS DRIVE
28	35 FAIRGROUNDS DRIVE	BLK 75	85 FAIRGROUNDS DRIVE
29	37 FAIRGROUNDS DRIVE	BLK 75	87 FAIRGROUNDS DRIVE
30	39 FAIRGROUNDS DRIVE	BLK 75	89 FAIRGROUNDS DRIVE
31	41 FAIRGROUNDS DRIVE	BLK 75	91 FAIRGROUNDS DRIVE
32	43 FAIRGROUNDS DRIVE	BLK 75	93 FAIRGROUNDS DRIVE
33	45 FAIRGROUNDS DRIVE		
34	47 FAIRGROUNDS DRIVE	BLK 76	32 BLUE RIBBON WAY
35	49 FAIRGROUNDS DRIVE	BLK 77	40 BLUE RIBBON WAY
36	51 FAIRGROUNDS DRIVE	BLK 78	44 BLUE RIBBON WAY
37	53 FAIRGROUNDS DRIVE	BLK 79	48 BLUE RIBBON WAY
38	55 FAIRGROUNDS DRIVE	BLK 80	52 BLUE RIBBON WAY
39	57 FAIRGROUNDS DRIVE	BLK 81	56 BLUE RIBBON WAY
40	59 FAIRGROUNDS DRIVE		
41	61 FAIRGROUNDS DRIVE		
42	63 FAIRGROUNDS DRIVE		
43	92 FAIRGROUNDS DRIVE		
44	88 FAIRGROUNDS DRIVE		
45	86 FAIRGROUNDS DRIVE		
46	82 FAIRGROUNDS DRIVE		
47	80 FAIRGROUNDS DRIVE		
48	76 FAIRGROUNDS DRIVE		
49	74 FAIRGROUNDS DRIVE		
50	70 FAIRGROUNDS DRIVE		
51	68 FAIRGROUNDS DRIVE		
52	64 FAIRGROUNDS DRIVE		
53	62 FAIRGROUNDS DRIVE		
54	58 FAIRGROUNDS DRIVE		
55	56 FAIRGROUNDS DRIVE		
56	52 FAIRGROUNDS DRIVE		
57	50 FAIRGROUNDS DRIVE		
58	44 FAIRGROUNDS DRIVE		