



Mailing Address:
 Hamilton City Hall
 71 Main Street West, 6th Floor
 Hamilton, ON L8P 4Y5
 www.hamilton.ca

Planning and Economic Development Department
 Growth Management Division
 Physical Address: 71 Main Street West, 5th Floor
 Phone: 905-546-2424 Ext.4348 Fax: 905-546-4202
 paul.toffoletti@hamilton.ca

Hamilton

March 30, 2017

File: 25T-200518

Losani Homes
 430 McNeilly Road
 Stoney Creek, ON, L8E 5E3

Webb Planning Consultants
 244 James Street South
 Hamilton, ON, L8P 3B3

A. T. McLaren Ltd.
 69 John Street South, Suite 230
 Hamilton, ON, L8N 2B9

NOTICE OF MUNICIPAL NUMBERS

FOR REGISTERED PLAN 62M-1239 "ANCASTER WOODLANDS PHASE 2"

Attached is a table of the municipal addresses that have been assigned, along with a copy of the above Registered Plan for this subdivision located in the former Town of Ancaster.

Please update your records accordingly. Should you have any questions regarding the above, please contact Paul Toffoletti at 905-546-2424 Ext.4348.

Alvin Chan, MCIP, RPP
 Senior Project Manager, Legislative Approvals,
 Planning Division, Planning and Economic Development Department.

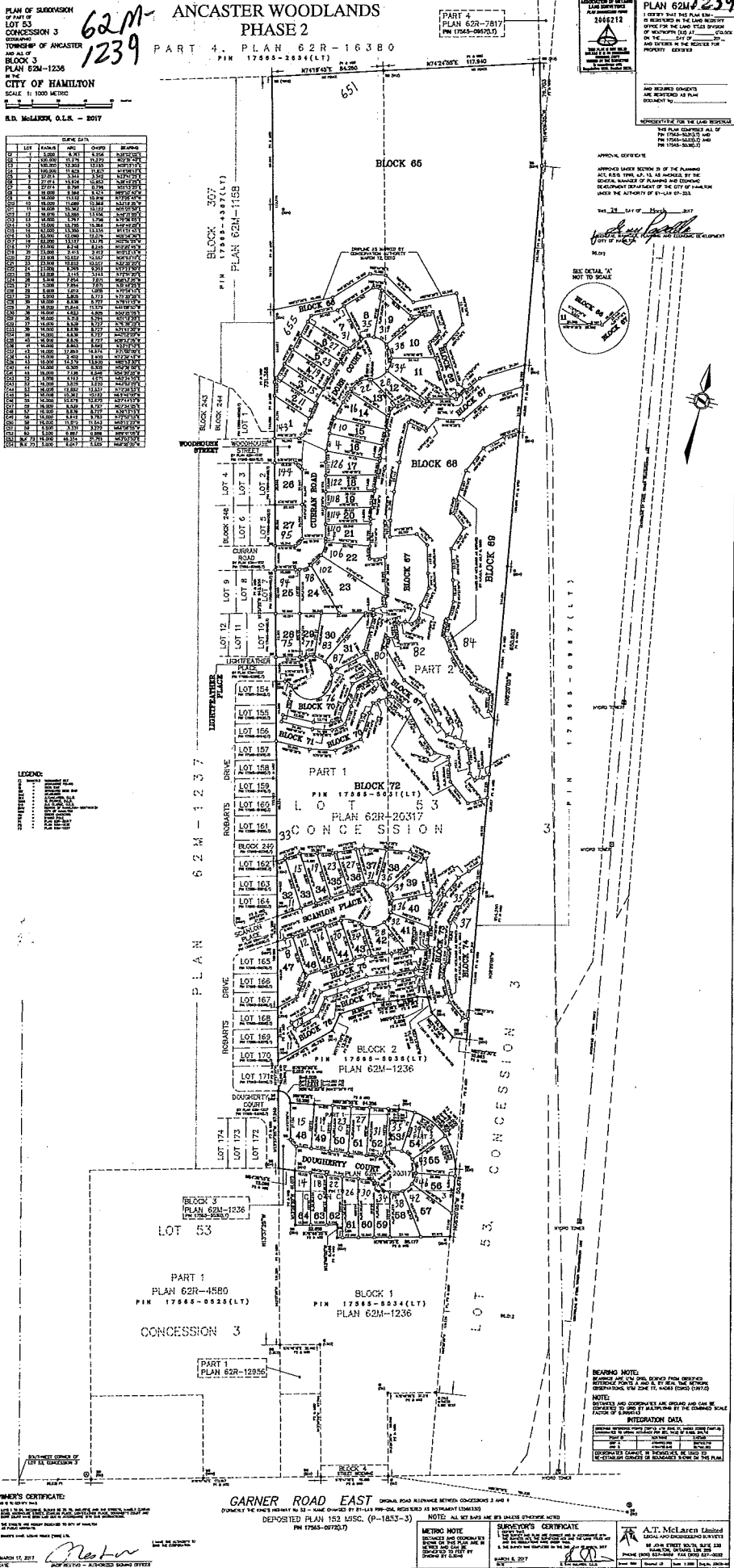
c.c.

Electrical Safety Authority
 MPAC
 City of Hamilton
 Cogeco Cable
 Hydro One Networks Inc.
 Canada Post
 Angus GeoSolutions Inc.
 Blue Line Taxi

Union Gas
 Fire and Police
 Bell Canada Eng.
 Bell Street Guide
 Bell Canada (911)
 Map Mobility
 DMTI Spatial
 DARTS

Ham.-Went. School Boards
 (Public & Separate)
 Canada Mortgage and Housing Corp.
 Hamilton CACC Ambulance Dispatch
 Hamilton-Burlington District Real Estate
 Canadian Cartographic Corp.
 Hamilton Automobile Club
 Telus

| 62M-1239 | | Ancaster Woodlands Phase 2 25T-200518 | |
|----------|-----------------------|--|-----------------------|
| Lot No. | Address | Lot No. | Address |
| 1 | 143 WOODHOUSE STREET | 48 | 15 DOUGHERTY COURT |
| 2 | 11 DORR COURT | 49 | 19 DOUGHERTY COURT |
| 3 | 15 DORR COURT | 50 | 23 DOUGHERTY COURT |
| 4 | 19 DORR COURT | 51 | 27 DOUGHERTY COURT |
| 5 | 23 DORR COURT | 52 | 31 DOUGHERTY COURT |
| 6 | 27 DORR COURT | 53 | 35 DOUGHERTY COURT |
| 7 | 31 DORR COURT | 54 | 39 DOUGHERTY COURT |
| 8 | 35 DORR COURT | 55 | 43 DOUGHERTY COURT |
| 9 | 39 DORR COURT | 56 | 46 DOUGHERTY COURT |
| 10 | 38 DORR COURT | 57 | 42 DOUGHERTY COURT |
| 11 | 34 DORR COURT | 58 | 38 DOUGHERTY COURT |
| 12 | 28 DORR COURT | 59 | 34 DOUGHERTY COURT |
| 13 | 22 DORR COURT | 60 | 30 DOUGHERTY COURT |
| 14 | 16 DORR COURT | 61 | 26 DOUGHERTY COURT |
| 15 | 10 DORR COURT | 62 | 22 DOUGHERTY COURT |
| 16 | 4 DORR COURT | 63 | 18 DOUGHERTY COURT |
| 17 | 126 CURRAN ROAD | 64 | 14 DOUGHERTY COURT |
| 18 | 122 CURRAN ROAD | 65 | 651 STONEHENGE DRIVE |
| 19 | 118 CURRAN ROAD | 66 | 655 STONEHENGE DRIVE |
| 20 | 114 CURRAN ROAD | 67 | 80 LIGHTFEATHER PLACE |
| 21 | 110 CURRAN ROAD | 68 | 82 LIGHTFEATHER PLACE |
| 22 | 106 CURRAN ROAD | 69 | 84 LIGHTFEATHER PLACE |
| 23 | 102 CURRAN ROAD | 70 | 76 LIGHTFEATHER PLACE |
| 24 | 98 CURRAN ROAD | 71 | 78 LIGHTFEATHER PLACE |
| 25 | 94 CURRAN ROAD | 72 | 33 ROBARTS DRIVE |
| 26 | 144 WOODHOUSE STREET | 73 | 35 ROBARTS DRIVE |
| 27 | 95 CURRAN ROAD | 74 | 37 ROBARTS DRIVE |
| 28 | 75 LIGHTFEATHER PLACE | 75 | 11 DOUGHERTY COURT |
| 29 | 79 LIGHTFEATHER PLACE | 76 | 13 DOUGHERTY COURT |
| 30 | 83 LIGHTFEATHER PLACE | | |
| 31 | 87 LIGHTFEATHER PLACE | | |
| 32 | 11 SCANLON PLACE | | |
| 33 | 15 SCANLON PLACE | | |
| 34 | 19 SCANLON PLACE | | |
| 35 | 23 SCANLON PLACE | | |
| 36 | 27 SCANLON PLACE | | |
| 37 | 31 SCANLON PLACE | | |
| 38 | 35 SCANLON PLACE | | |
| 39 | 39 SCANLON PLACE | | |
| 40 | 36 SCANLON PLACE | | |
| 41 | 32 SCANLON PLACE | | |
| 42 | 28 SCANLON PLACE | | |
| 43 | 24 SCANLON PLACE | | |
| 44 | 20 SCANLON PLACE | | |
| 45 | 16 SCANLON PLACE | | |
| 46 | 12 SCANLON PLACE | | |
| 47 | 8 SCANLON PLACE | | |



62M-1239
62R-16380
 PLAN OF SUBDIVISION
 OF PART OF
 LOT 53
 CONCESSION 3
 TOWNSHIP OF ANCASTER
 AND ALL OF
 BLOCK 3
 PLAN 62M-1236
 IN THE
 CITY OF HAMILTON
 SCALE 1:1000 METRIC
 R.D. McLAUGH, O.L.R. - 2017

ANCASTER WOODLANDS
 PHASE 2
 PART 4, PLAN 62R-16380
 P.M. 17265-2034(LT)

PART 4
 PLAN 62R-7817
 P.M. 17565-0870(LT)

PLAN 62M-1239
 2046212
 THE PLAN DEPARTS ALL OF
 P.M. 17265-2034(LT) AND
 P.M. 17565-0870(LT)
 AND FUTURE IN THE RESPECT FOR
 PROPERTY, COPIES

| LOT | FORMA | AREA | ORDER | BLK/CON |
|-----|--------|-------|-------|---------|
| 1 | 120.00 | 12.00 | 1 | 66/3 |
| 2 | 120.00 | 12.00 | 2 | 66/3 |
| 3 | 120.00 | 12.00 | 3 | 66/3 |
| 4 | 120.00 | 12.00 | 4 | 66/3 |
| 5 | 120.00 | 12.00 | 5 | 66/3 |
| 6 | 120.00 | 12.00 | 6 | 66/3 |
| 7 | 120.00 | 12.00 | 7 | 66/3 |
| 8 | 120.00 | 12.00 | 8 | 66/3 |
| 9 | 120.00 | 12.00 | 9 | 66/3 |
| 10 | 120.00 | 12.00 | 10 | 66/3 |
| 11 | 120.00 | 12.00 | 11 | 66/3 |
| 12 | 120.00 | 12.00 | 12 | 66/3 |
| 13 | 120.00 | 12.00 | 13 | 66/3 |
| 14 | 120.00 | 12.00 | 14 | 66/3 |
| 15 | 120.00 | 12.00 | 15 | 66/3 |
| 16 | 120.00 | 12.00 | 16 | 66/3 |
| 17 | 120.00 | 12.00 | 17 | 66/3 |
| 18 | 120.00 | 12.00 | 18 | 66/3 |
| 19 | 120.00 | 12.00 | 19 | 66/3 |
| 20 | 120.00 | 12.00 | 20 | 66/3 |
| 21 | 120.00 | 12.00 | 21 | 66/3 |
| 22 | 120.00 | 12.00 | 22 | 66/3 |
| 23 | 120.00 | 12.00 | 23 | 66/3 |
| 24 | 120.00 | 12.00 | 24 | 66/3 |
| 25 | 120.00 | 12.00 | 25 | 66/3 |
| 26 | 120.00 | 12.00 | 26 | 66/3 |
| 27 | 120.00 | 12.00 | 27 | 66/3 |
| 28 | 120.00 | 12.00 | 28 | 66/3 |
| 29 | 120.00 | 12.00 | 29 | 66/3 |
| 30 | 120.00 | 12.00 | 30 | 66/3 |
| 31 | 120.00 | 12.00 | 31 | 66/3 |
| 32 | 120.00 | 12.00 | 32 | 66/3 |
| 33 | 120.00 | 12.00 | 33 | 66/3 |
| 34 | 120.00 | 12.00 | 34 | 66/3 |
| 35 | 120.00 | 12.00 | 35 | 66/3 |
| 36 | 120.00 | 12.00 | 36 | 66/3 |
| 37 | 120.00 | 12.00 | 37 | 66/3 |
| 38 | 120.00 | 12.00 | 38 | 66/3 |
| 39 | 120.00 | 12.00 | 39 | 66/3 |
| 40 | 120.00 | 12.00 | 40 | 66/3 |
| 41 | 120.00 | 12.00 | 41 | 66/3 |
| 42 | 120.00 | 12.00 | 42 | 66/3 |
| 43 | 120.00 | 12.00 | 43 | 66/3 |
| 44 | 120.00 | 12.00 | 44 | 66/3 |
| 45 | 120.00 | 12.00 | 45 | 66/3 |
| 46 | 120.00 | 12.00 | 46 | 66/3 |
| 47 | 120.00 | 12.00 | 47 | 66/3 |
| 48 | 120.00 | 12.00 | 48 | 66/3 |
| 49 | 120.00 | 12.00 | 49 | 66/3 |
| 50 | 120.00 | 12.00 | 50 | 66/3 |
| 51 | 120.00 | 12.00 | 51 | 66/3 |
| 52 | 120.00 | 12.00 | 52 | 66/3 |
| 53 | 120.00 | 12.00 | 53 | 66/3 |
| 54 | 120.00 | 12.00 | 54 | 66/3 |
| 55 | 120.00 | 12.00 | 55 | 66/3 |
| 56 | 120.00 | 12.00 | 56 | 66/3 |
| 57 | 120.00 | 12.00 | 57 | 66/3 |
| 58 | 120.00 | 12.00 | 58 | 66/3 |
| 59 | 120.00 | 12.00 | 59 | 66/3 |
| 60 | 120.00 | 12.00 | 60 | 66/3 |
| 61 | 120.00 | 12.00 | 61 | 66/3 |
| 62 | 120.00 | 12.00 | 62 | 66/3 |
| 63 | 120.00 | 12.00 | 63 | 66/3 |
| 64 | 120.00 | 12.00 | 64 | 66/3 |
| 65 | 120.00 | 12.00 | 65 | 66/3 |
| 66 | 120.00 | 12.00 | 66 | 66/3 |
| 67 | 120.00 | 12.00 | 67 | 66/3 |
| 68 | 120.00 | 12.00 | 68 | 66/3 |
| 69 | 120.00 | 12.00 | 69 | 66/3 |
| 70 | 120.00 | 12.00 | 70 | 66/3 |
| 71 | 120.00 | 12.00 | 71 | 66/3 |
| 72 | 120.00 | 12.00 | 72 | 66/3 |
| 73 | 120.00 | 12.00 | 73 | 66/3 |
| 74 | 120.00 | 12.00 | 74 | 66/3 |
| 75 | 120.00 | 12.00 | 75 | 66/3 |
| 76 | 120.00 | 12.00 | 76 | 66/3 |
| 77 | 120.00 | 12.00 | 77 | 66/3 |
| 78 | 120.00 | 12.00 | 78 | 66/3 |
| 79 | 120.00 | 12.00 | 79 | 66/3 |
| 80 | 120.00 | 12.00 | 80 | 66/3 |
| 81 | 120.00 | 12.00 | 81 | 66/3 |
| 82 | 120.00 | 12.00 | 82 | 66/3 |
| 83 | 120.00 | 12.00 | 83 | 66/3 |
| 84 | 120.00 | 12.00 | 84 | 66/3 |
| 85 | 120.00 | 12.00 | 85 | 66/3 |
| 86 | 120.00 | 12.00 | 86 | 66/3 |
| 87 | 120.00 | 12.00 | 87 | 66/3 |
| 88 | 120.00 | 12.00 | 88 | 66/3 |
| 89 | 120.00 | 12.00 | 89 | 66/3 |
| 90 | 120.00 | 12.00 | 90 | 66/3 |
| 91 | 120.00 | 12.00 | 91 | 66/3 |
| 92 | 120.00 | 12.00 | 92 | 66/3 |
| 93 | 120.00 | 12.00 | 93 | 66/3 |
| 94 | 120.00 | 12.00 | 94 | 66/3 |
| 95 | 120.00 | 12.00 | 95 | 66/3 |
| 96 | 120.00 | 12.00 | 96 | 66/3 |
| 97 | 120.00 | 12.00 | 97 | 66/3 |
| 98 | 120.00 | 12.00 | 98 | 66/3 |
| 99 | 120.00 | 12.00 | 99 | 66/3 |
| 100 | 120.00 | 12.00 | 100 | 66/3 |

LEGEND:
 ...
 ...
 ...

APPROVALS:
 APPROVED UNDER SECTION 20 OF THE PLANNING
 ACT, R.S.O. 1990, c. 19, AS AMENDED, BY THE
 CHIEF CLERK OF PLANNING AND ECONOMIC
 DEVELOPMENT DEPARTMENT OF THE CITY OF HAMILTON
 UNDER THE AUTHORITY OF BY-LAW 07-203

THE 23rd DAY OF March 2017
[Signature]
 CITY OF HAMILTON PLANNING AND ECONOMIC DEVELOPMENT

METRO
 SEE DETAIL "A"
 NOT TO SCALE



OWNER'S CERTIFICATE:
 I HEREBY CERTIFY THAT THE ABOVE IS A TRUE AND CORRECT COPY OF THE PLAN AS DEPOSITED FOR REVISION AND THAT I AM THE REGISTERED OWNER OF THE LAND DESCRIBED IN THE PLAN.
 DEPOSITED PLAN 152 L.J.S.C. (P-1853-3) NOTE: ALL SET BACKS ARE 3.05 METERS (10 FEET) UNLESS OTHERWISE NOTED.
 METRO NOTE: ...
 SURVEYOR'S CERTIFICATE: ...
 A.T. McLaughlin
 2017

PLAN OF SUBDIVISION
OF PART
LOT 53
CONCESSION 3
G2209420
TOWNSHIP OF ANCASTER
AND ALL OF
BLOCK 3
PLAN 62M-1236
IN THE
CITY OF HAMILTON

SCALE 1: 1000 METRIC

**ANCASTER WOODLANDS
PHASE 2**

PART 4, PLAN 62R-16380
PIN 17565-2854(LT)

PART 4
PLAN 62R-7817
PIN 17565-0957(LT)

ASSOCIATION OF ONTARIO
LAND SURVEYORS
PLAN EXAMINATION FORM
2006212

PLAN 62M-
I CERTIFY THAT THIS PLAN 62M-
IS REGISTERED IN THE LAND REGISTRY
OFFICE FOR THE LAND TITLES DIVISION
OF NORTHWEST (62) AT _____ O'CLOCK
ON THE _____ DAY OF _____ 2017
AND ENTERED IN THE REGISTER FOR
PROPERTY IDENTIFIER _____

AND REQUIRED CONSENTS
ARE REGISTERED AS PLAN
DOCUMENT No. _____

REPRESENTATIVE FOR THE LAND REGISTRAR

THIS PLAN COMPRISES ALL OF
PIN 17565-5031(LT) AND
PIN 17565-5031(L) AND
PIN 17565-5036(L)

APPROVAL CERTIFICATE

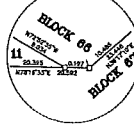
APPROVED UNDER SECTION 81 OF THE PLANNING
ACT, R.S.O. 1990, c.P. 13, AS AMENDED, BY THE
GENERAL MANAGER OF PLANNING AND ECONOMIC
DEVELOPMENT DEPARTMENT OF THE CITY OF HAMILTON
UNDER THE AUTHORITY OF BY-LAW 07-323.

THIS 24 DAY OF March, 2017

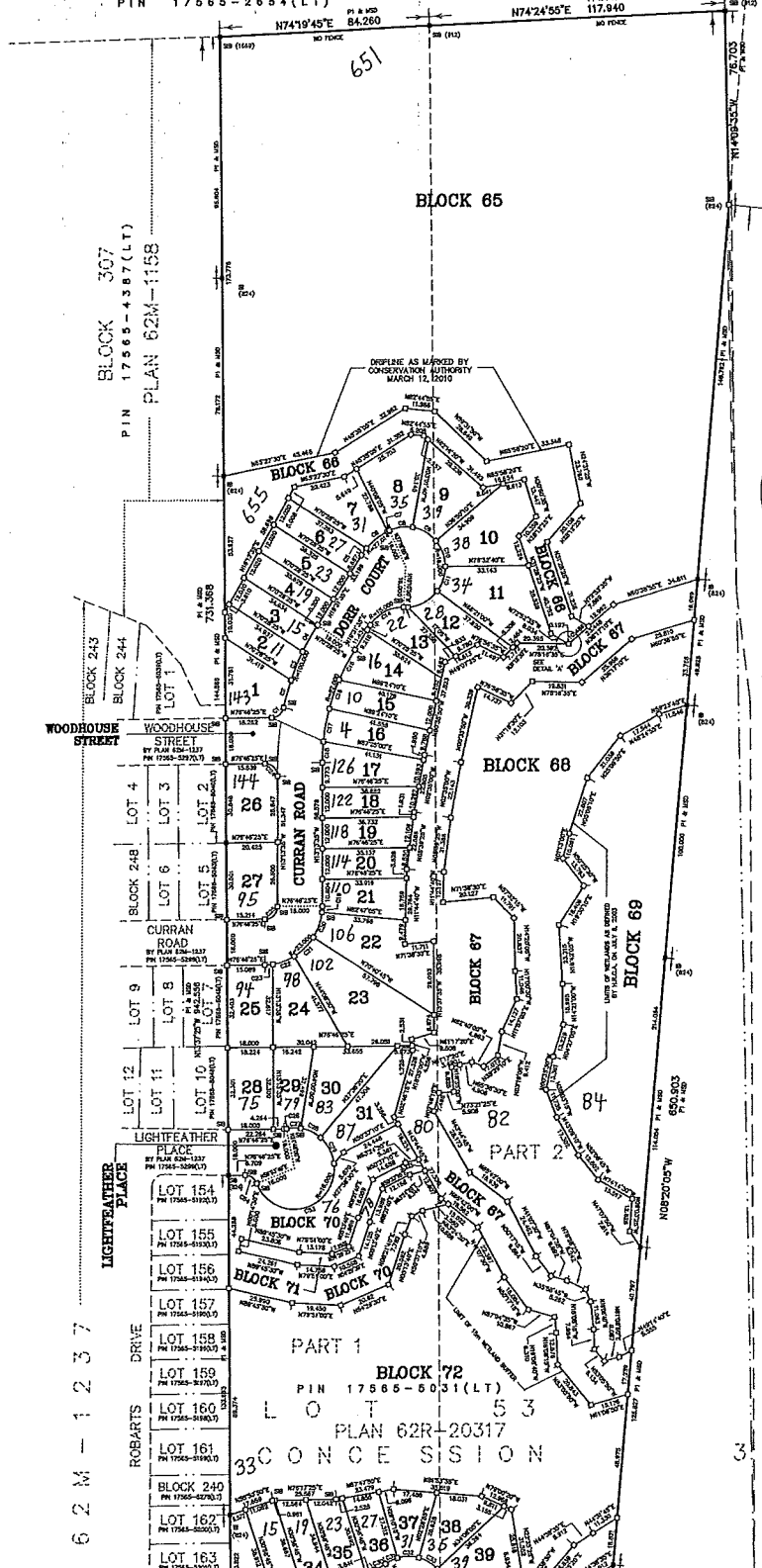
[Signature]
GENERAL MANAGER, PLANNING AND ECONOMIC DEVELOPMENT
CITY OF HAMILTON

93.012

SEE DETAIL 'A'
NOT TO SCALE



| LOT | RADIUS | ARC | CHORD | BEARING |
|-----|--------|---------|--------|--------------------|
| C1 | 1 | 5.000 | 6.761 | 8.258 N38°22'05"E |
| C2 | 1 | 100.000 | 11.273 | 11.270 N02°31'40"E |
| C3 | 2 | 100.000 | 12.233 | 10.166 N09°15'05"E |
| C4 | 3 | 100.000 | 11.878 | 11.851 N16°08'15"E |
| C5 | 8 | 27.014 | 3.344 | 3.342 N23°41'25"E |
| C6 | 7 | 27.014 | 10.979 | 10.852 N38°49'25"E |
| C7 | 8 | 27.014 | 0.759 | 0.750 N51°12'20"E |
| C8 | 8 | 18.500 | 8.568 | 8.424 N69°20'40"W |
| C9 | 9 | 18.500 | 11.012 | 10.909 N73°02'45"W |
| C10 | 10 | 18.500 | 11.089 | 10.868 N33°18'35"W |
| C11 | 11 | 18.500 | 10.362 | 10.182 N05°55'20"E |
| C12 | 12 | 18.500 | 13.858 | 13.456 N48°11'05"E |
| C13 | 13 | 18.500 | 1.787 | 1.788 N76°30'05"E |
| C14 | 13 | 18.500 | 15.765 | 15.068 N49°40'20"E |
| C15 | 14 | 82.000 | 13.300 | 13.332 N45°14'05"E |
| C16 | 15 | 82.000 | 12.090 | 12.079 N05°50'30"E |
| C17 | 16 | 82.000 | 13.187 | 13.174 N25°12'55"E |
| C18 | 17 | 82.000 | 8.248 | 8.245 N10°05'45"W |
| C19 | 21 | 23.000 | 2.413 | 2.412 N10°15'15"W |
| C20 | 22 | 23.000 | 10.657 | 10.657 N09°00'10"E |
| C21 | 23 | 23.000 | 10.650 | 10.657 N32°52'20"E |
| C22 | 24 | 23.000 | 8.265 | 8.203 N57°33'50"E |
| C23 | 25 | 23.000 | 2.145 | 2.143 N72°51'30"E |
| C24 | 26 | 8.000 | 7.834 | 7.071 N58°13'35"W |
| C25 | 27 | 8.000 | 7.854 | 7.071 N31°46'25"E |
| C26 | 29 | 8.000 | 1.010 | 1.006 N10°00'10"E |
| C27 | 29 | 8.000 | 8.805 | 5.773 N75°29'35"E |
| C28 | 30 | 16.000 | 8.839 | 8.727 N76°11'15"W |
| C29 | 31 | 16.000 | 11.848 | 11.579 N41°15'20"W |
| C30 | 38 | 16.000 | 4.873 | 4.805 N50°25'05"E |
| C31 | 39 | 16.000 | 5.318 | 5.294 N51°16'20"E |
| C32 | 37 | 16.000 | 8.839 | 8.727 N76°11'15"W |
| C33 | 38 | 16.000 | 8.839 | 8.727 N71°41'30"W |
| C34 | 39 | 16.000 | 8.839 | 8.727 N40°02'20"W |
| C35 | 40 | 16.000 | 8.839 | 8.727 N08°13'05"W |
| C36 | 41 | 16.000 | 8.603 | 8.892 N23°17'10"E |
| C37 | 42 | 16.000 | 12.892 | 12.974 N71°40'00"E |
| C38 | 43 | 16.000 | 2.492 | 2.490 N72°40'40"W |
| C39 | 43 | 16.000 | 14.379 | 13.900 N85°53'30"E |
| C40 | 44 | 16.000 | 8.305 | 8.300 N59°30'05"E |
| C41 | 48 | 8.000 | 3.900 | 3.846 N40°12'35"W |
| C42 | 52 | 8.000 | 4.183 | 4.071 N60°34'55"E |
| C43 | 52 | 16.000 | 8.268 | 8.893 N43°03'20"E |
| C44 | 53 | 16.000 | 12.882 | 12.537 N72°36'55"E |
| C45 | 54 | 16.000 | 10.362 | 10.182 N85°49'00"W |
| C46 | 55 | 16.000 | 10.878 | 10.870 N74°41'05"W |
| C47 | 56 | 16.000 | 8.839 | 8.727 N07°24'05"E |
| C48 | 57 | 16.000 | 8.839 | 8.727 N39°18'15"E |
| C49 | 58 | 16.000 | 8.942 | 8.783 N72°55'25"E |
| C50 | 59 | 16.000 | 11.810 | 11.543 N88°12'20"W |
| C51 | 59 | 8.000 | 3.331 | 3.270 N66°08'55"W |
| C52 | 60 | 8.000 | 0.897 | 0.888 N84°11'05"E |
| C53 | BLK 70 | 16.000 | 46.354 | 31.781 N83°45'50"E |
| C54 | BLK 70 | 8.000 | 6.017 | 5.855 N58°32'00"W |



17565-0887(LT)

LEGEND:
 BEARS
 EXISTING
 BOUNDARY SET
 EXISTING ROAD
 EXISTING WALK
 EXISTING HIGH BAR
 EXISTING FENCE
 EXISTING CURB
 EXISTING DRIVE
 EXISTING SIDEWALK
 EXISTING CURB
 EXISTING DRIVE
 EXISTING SIDEWALK
 EXISTING CURB
 EXISTING DRIVE
 EXISTING SIDEWALK

- LEGEND:**
- LIGHTFRAMES PLACE
 - ROBERTS DRIVE
 - DOUGHERTY COURT
 - SCANLON PLACE
 - BLOCK 70
 - BLOCK 71
 - BLOCK 72
 - BLOCK 73
 - BLOCK 74
 - BLOCK 75
 - BLOCK 76
 - BLOCK 77
 - BLOCK 78
 - BLOCK 79
 - BLOCK 80
 - BLOCK 81
 - BLOCK 82
 - BLOCK 83
 - BLOCK 84
 - BLOCK 85
 - BLOCK 86
 - BLOCK 87
 - BLOCK 88
 - BLOCK 89
 - BLOCK 90
 - BLOCK 91
 - BLOCK 92
 - BLOCK 93
 - BLOCK 94
 - BLOCK 95
 - BLOCK 96
 - BLOCK 97
 - BLOCK 98
 - BLOCK 99
 - BLOCK 100
 - BLOCK 101
 - BLOCK 102
 - BLOCK 103
 - BLOCK 104
 - BLOCK 105
 - BLOCK 106
 - BLOCK 107
 - BLOCK 108
 - BLOCK 109
 - BLOCK 110
 - BLOCK 111
 - BLOCK 112
 - BLOCK 113
 - BLOCK 114
 - BLOCK 115
 - BLOCK 116
 - BLOCK 117
 - BLOCK 118
 - BLOCK 119
 - BLOCK 120
 - BLOCK 121
 - BLOCK 122
 - BLOCK 123
 - BLOCK 124
 - BLOCK 125
 - BLOCK 126
 - BLOCK 127
 - BLOCK 128
 - BLOCK 129
 - BLOCK 130
 - BLOCK 131
 - BLOCK 132
 - BLOCK 133
 - BLOCK 134
 - BLOCK 135
 - BLOCK 136
 - BLOCK 137
 - BLOCK 138
 - BLOCK 139
 - BLOCK 140
 - BLOCK 141
 - BLOCK 142
 - BLOCK 143
 - BLOCK 144
 - BLOCK 145
 - BLOCK 146
 - BLOCK 147
 - BLOCK 148
 - BLOCK 149
 - BLOCK 150
 - BLOCK 151
 - BLOCK 152
 - BLOCK 153
 - BLOCK 154
 - BLOCK 155
 - BLOCK 156
 - BLOCK 157
 - BLOCK 158
 - BLOCK 159
 - BLOCK 160
 - BLOCK 161
 - BLOCK 162
 - BLOCK 163
 - BLOCK 164
 - BLOCK 165
 - BLOCK 166
 - BLOCK 167
 - BLOCK 168
 - BLOCK 169
 - BLOCK 170
 - BLOCK 171
 - BLOCK 172
 - BLOCK 173
 - BLOCK 174
 - BLOCK 175
 - BLOCK 176
 - BLOCK 177
 - BLOCK 178
 - BLOCK 179
 - BLOCK 180
 - BLOCK 181
 - BLOCK 182
 - BLOCK 183
 - BLOCK 184
 - BLOCK 185
 - BLOCK 186
 - BLOCK 187
 - BLOCK 188
 - BLOCK 189
 - BLOCK 190
 - BLOCK 191
 - BLOCK 192
 - BLOCK 193
 - BLOCK 194
 - BLOCK 195
 - BLOCK 196
 - BLOCK 197
 - BLOCK 198
 - BLOCK 199
 - BLOCK 200
 - BLOCK 201
 - BLOCK 202
 - BLOCK 203
 - BLOCK 204
 - BLOCK 205
 - BLOCK 206
 - BLOCK 207
 - BLOCK 208
 - BLOCK 209
 - BLOCK 210
 - BLOCK 211
 - BLOCK 212
 - BLOCK 213
 - BLOCK 214
 - BLOCK 215
 - BLOCK 216
 - BLOCK 217
 - BLOCK 218
 - BLOCK 219
 - BLOCK 220
 - BLOCK 221
 - BLOCK 222
 - BLOCK 223
 - BLOCK 224
 - BLOCK 225
 - BLOCK 226
 - BLOCK 227
 - BLOCK 228
 - BLOCK 229
 - BLOCK 230
 - BLOCK 231
 - BLOCK 232
 - BLOCK 233
 - BLOCK 234
 - BLOCK 235
 - BLOCK 236
 - BLOCK 237
 - BLOCK 238
 - BLOCK 239
 - BLOCK 240
 - BLOCK 241
 - BLOCK 242
 - BLOCK 243
 - BLOCK 244
 - BLOCK 245
 - BLOCK 246
 - BLOCK 247
 - BLOCK 248
 - BLOCK 249
 - BLOCK 250
 - BLOCK 251
 - BLOCK 252
 - BLOCK 253
 - BLOCK 254
 - BLOCK 255
 - BLOCK 256
 - BLOCK 257
 - BLOCK 258
 - BLOCK 259
 - BLOCK 260
 - BLOCK 261
 - BLOCK 262
 - BLOCK 263
 - BLOCK 264
 - BLOCK 265
 - BLOCK 266
 - BLOCK 267
 - BLOCK 268
 - BLOCK 269
 - BLOCK 270
 - BLOCK 271
 - BLOCK 272
 - BLOCK 273
 - BLOCK 274
 - BLOCK 275
 - BLOCK 276
 - BLOCK 277
 - BLOCK 278
 - BLOCK 279
 - BLOCK 280
 - BLOCK 281
 - BLOCK 282
 - BLOCK 283
 - BLOCK 284
 - BLOCK 285
 - BLOCK 286
 - BLOCK 287
 - BLOCK 288
 - BLOCK 289
 - BLOCK 290
 - BLOCK 291
 - BLOCK 292
 - BLOCK 293
 - BLOCK 294
 - BLOCK 295
 - BLOCK 296
 - BLOCK 297
 - BLOCK 298
 - BLOCK 299
 - BLOCK 300

PLAN 62M-1236

CONCESSION 3

PIN 17565

CONCESSION 3

LOT 53

HYDRO TOWER

OWNER'S CERTIFICATE:
 THIS IS TO CERTIFY THAT:
 1. LOTS 1 TO 61 INCLUDING BLOCKS 62 TO 76 INCLUDING THE STREETS, NAMELY GARDNER ROAD, WOODBINE STREET, DOUGHERTY PLACE, DOUGHERTY COURT AND DOUGHERTY COURT HAVE BEEN Laid OUT IN ACCORDANCE WITH OUR INSTRUCTIONS.
 2. THE SURVEYORS HAVE BEEN DELEGATED TO CITY OF HAMILTON AS PUBLIC SURVEYORS.
 3. OWNER'S NAME: LORAIN JONES (1990) LTD.
 DATE: MARCH 17, 2017
 JACK RESTIVO - AUTHORIZED SIGNING OFFICER

GARDNER ROAD EAST ORIGINAL ROAD ALLOWANCE BETWEEN CONCESSIONS 3 AND 4
 (FORMERLY THE KING'S HIGHWAY No 53 - NAME CHANGED BY BY-LAW R99-056, REGISTERED AS INSTRUMENT LT66230)
 DEPOSITED PLAN 152 MISC. (P-1853-3)
 PIN 17565-0972(LT)

METRIC NOTE
 DISTANCES AND COORDINATES SHOWN ON THIS PLAN ARE IN METRES AND CAN BE CONVERTED TO FEET BY DIVIDING BY 0.3048

SURVEYOR'S CERTIFICATE
 I, THE SURVEYOR, HAVE BEEN DELEGATED TO THE CITY OF HAMILTON AS A PUBLIC SURVEYOR AND I HAVE CONDUCTED THIS SURVEY IN ACCORDANCE WITH THE SURVEY ACT AND THE REGULATIONS MADE UNDER THAT ACT AND THE SURVEY WAS COMPLETED ON THE 17th DAY OF MARCH, 2017.
 DATE: MARCH 8, 2017
 E. L. McLAREN, O.L.S.

BEARING NOTE:
 BEARINGS ARE UTM GRID, DERIVED FROM OBSERVED REFERENCE POINTS A AND B, BY REAL TIME NETWORK OBSERVATIONS, UTM ZONE 17, NAD83 (CGRS) (1997.0)

NOTE:
 DISTANCES AND COORDINATES ARE GROUND AND CAN BE CONVERTED TO GRID BY MULTIPLYING BY THE CORNERED SCALE FACTOR OF 0.999814

INTEGRATION DATA

| POINT ID | UTM EASTING | UTM NORTHING |
|----------|-------------|--------------|
| REF A | 644843.841 | 5078747.8 |
| REF B | 644843.841 | 5078747.8 |

COORDINATES CANNOT, IN THEMSELVES, BE USED TO RE-ESTABLISH CORNERS OR BOUNDARIES SHOWN ON THIS PLAN.

A.T. McLaren Limited
 LEGAL AND ENGINEERING SURVEYS
 69 JOHN STREET SOUTH, SUITE 230
 HAMILTON, ONTARIO, L9N 2B9
 PHONE: (905) 827-8008 FAX: (905) 827-0032