



Mailing Address:
 Hamilton City Hall
 71 Main Street West, 6th Floor
 Hamilton, ON L8P 4Y5
 www.hamilton.ca

Planning and Economic Development Department

Growth Management Division

Physical Address: 71 Main Street West, 5th Floor

Phone: 905-546-2424 Ext.4348 Fax: 905-540-5611

paul.toffoletti@hamilton.ca

Hamilton

September 12, 2017

25T-201107 and 25T-201304

1800615 Ontario Ltd.
 c/o A. DiCenzo and S. Manchia
 41 – 1070 Stone Church Road East
 Hamilton, ON, L8W 3K8

A. T. McLaren Ltd.
 69 John Street South, Suite 230
 Hamilton, ON, L8N 2B9

NOTICE OF MUNICIPAL NUMBERS

FOR REGISTERED PLAN 62M-1241 “FOOTHILLS OF WINONA PHASES 2 AND 3”

Attached is a table of the municipal addresses that have been assigned, along with a copy of the above Registered Plan for this subdivision located in the former City of Stoney Creek.

Please note that only Blocks 1, 2, 3, 4, 6, 7, 8, part of 9, 10, 11, 12, 19, 21, 22, 23, 24, 25 and 26 have been addressed. The lotting for the remaining Blocks are to be finalized by the owner at a future date. Future Address Notification Letters will be sent.

Please update your records accordingly. Should you have any questions regarding the above, please contact Paul Toffoletti at 905-546-2424 Ext.4348.

Alvin Chan, MCIP, RPP
 Senior Project Manager, Growth Planning Section,
 Planning and Economic Development Department.

c.c.

Electrical Safety Authority
 MPAC
 City of Hamilton
 Cogeco Cable
 Alectra Utilities
 Canada Post
 Angus GeoSolutions Inc.
 Blue Line Taxi

Union Gas
 Fire and Police
 Bell Canada Eng.
 Bell Street Guide
 Bell Canada (911)
 Map Mobility
 DMTI Spatial
 DARTS

Ham.-Went. School Boards
 (Public & Separate)
 Canada Mortgage and Housing Corp.
 Hamilton CACC Ambulance Dispatch
 Hamilton-Burlington District Real Estate
 Canadian Cartographic Corp.
 Hamilton Automobile Club
 Telus

These addresses are based on the attached site plan dated Feb 2014, and revised Oct 2016.

Foothills of Winona
Phases 2 and 3
62M-1241

Block	Address	Lot No.	Address
Block 1	4 SAUVIGNON CRESCENT	Block 9-14	27 PINOT CRESCENT
Block 1	8 SAUVIGNON CRESCENT	Block 9-15	29 PINOT CRESCENT
Block 1	12 SAUVIGNON CRESCENT	Block 9-16	31 PINOT CRESCENT
Block 1	16 SAUVIGNON CRESCENT	Block 9-17	33 PINOT CRESCENT
Block 1	20 SAUVIGNON CRESCENT	Block 9-18	35 PINOT CRESCENT
Block 1	24 SAUVIGNON CRESCENT	Block 9-19	37 PINOT CRESCENT
Block 1	28 SAUVIGNON CRESCENT	Block 9-20	39 PINOT CRESCENT
Block 1	32 SAUVIGNON CRESCENT	Block 9-21	41 PINOT CRESCENT
		Block 9-22	43 PINOT CRESCENT
Block 2	52 SAUVIGNON CRESCENT	Block 9-23	45 PINOT CRESCENT
Block 2	56 SAUVIGNON CRESCENT	Block 9-24	47 PINOT CRESCENT
		Block 9-25	49 PINOT CRESCENT
Block 3	33 SAUVIGNON CRESCENT	Block 9-26	51 PINOT CRESCENT
		Block 9-27	53 PINOT CRESCENT
Block 4	31 FOOTHILLS LANE	Block 9-28	55 PINOT CRESCENT
		Block 9-29	57 PINOT CRESCENT
Block 6-1	51 SAUVIGNON CRESCENT	Block 9-30	59 PINOT CRESCENT
Block 6-2	49 SAUVIGNON CRESCENT	Block 9-31	61 PINOT CRESCENT
Block 6-3	47 SAUVIGNON CRESCENT	Block 9-32	63 PINOT CRESCENT
Block 6-4	45 SAUVIGNON CRESCENT	Block 9-33	65 PINOT CRESCENT
Block 6-5	43 SAUVIGNON CRESCENT		
Block 6-6	41 SAUVIGNON CRESCENT	Block 10-1	2 PINOT CRESCENT
Block 6-10	37 SAUVIGNON CRESCENT	Block 10-2	4 PINOT CRESCENT
		Block 10-3	6 PINOT CRESCENT
Block 7-1	49 FOOTHILLS LANE	Block 10-4	8 PINOT CRESCENT
Block 7-2	47 FOOTHILLS LANE	Block 10-5	10 PINOT CRESCENT
Block 7-3	45 FOOTHILLS LANE	Block 10-6	12 PINOT CRESCENT
Block 7-4	43 FOOTHILLS LANE	Block 10-7	14 PINOT CRESCENT
Block 7-5	41 FOOTHILLS LANE		
Block 7-6	39 FOOTHILLS LANE	Block 11-1	34 PINOT CRESCENT
Block 7-10	35 FOOTHILLS LANE	Block 11-2	36 PINOT CRESCENT
		Block 11-3	38 PINOT CRESCENT
Block 8-1	57 FOOTHILLS LANE	Block 11-4	40 PINOT CRESCENT
Block 8-2	59 FOOTHILLS LANE	Block 11-5	42 PINOT CRESCENT
Block 8-3	61 FOOTHILLS LANE	Block 11-6	44 PINOT CRESCENT
Block 8-4	63 FOOTHILLS LANE	Block 11-7	46 PINOT CRESCENT
Block 8-5	65 FOOTHILLS LANE	Block 11-8	48 PINOT CRESCENT
Block 8-6	67 FOOTHILLS LANE	Block 11-9	50 PINOT CRESCENT
Block 8-7	69 FOOTHILLS LANE	Block 11-10	52 PINOT CRESCENT
Block 8-8	71 FOOTHILLS LANE	Block 11-11	54 PINOT CRESCENT
		Block 11-12	56 PINOT CRESCENT
Block 9-1	1 PINOT CRESCENT	Block 11-13	58 PINOT CRESCENT
Block 9-2	3 PINOT CRESCENT	Block 11-14	60 PINOT CRESCENT
Block 9-3	5 PINOT CRESCENT	Block 11-15	62 PINOT CRESCENT
Block 9-4	7 PINOT CRESCENT	Block 11-16	64 PINOT CRESCENT
Block 9-5	9 PINOT CRESCENT		
Block 9-6	11 PINOT CRESCENT		
Block 9-7	13 PINOT CRESCENT		
Block 9-8	15 PINOT CRESCENT		
Block 9-9	17 PINOT CRESCENT		
Block 9-10	19 PINOT CRESCENT		
Block 9-11	21 PINOT CRESCENT		
Block 9-12	23 PINOT CRESCENT		
Block 9-13	25 PINOT CRESCENT		

These addresses are based on the attached site plan dated Feb 2014, and revised Oct 2016.

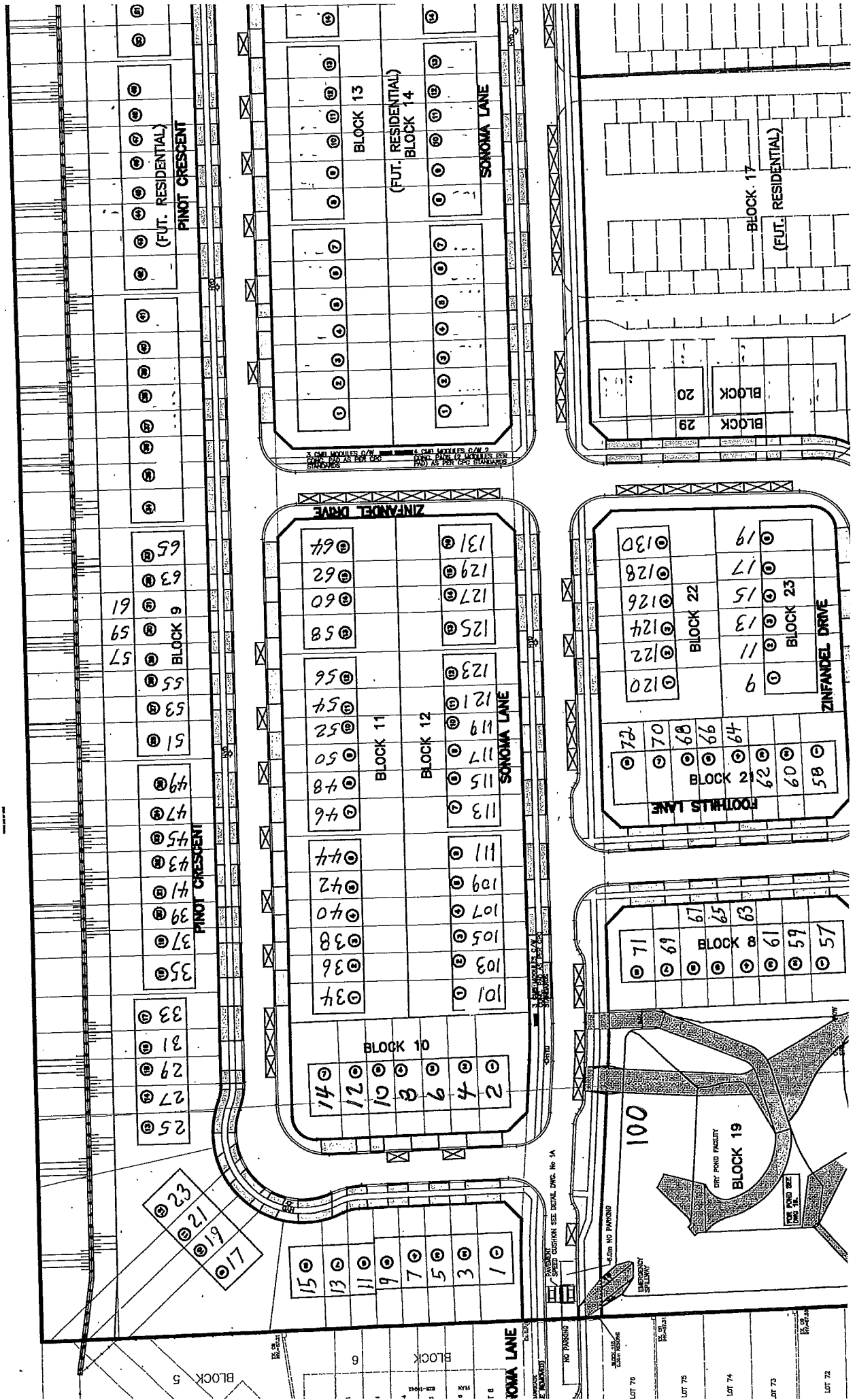
Foothills of Winona
Phases 2 and 3
62M-1241

Block	Address	Lot No.	Address
Block 12-1	101 SONOMA LANE	Block 21-1	58 FOOTHILLS LANE
Block 12-2	103 SONOMA LANE	Block 21-2	60 FOOTHILLS LANE
Block 12-3	105 SONOMA LANE	Block 21-3	62 FOOTHILLS LANE
Block 12-4	107 SONOMA LANE	Block 21-4	64 FOOTHILLS LANE
Block 12-5	109 SONOMA LANE	Block 21-5	66 FOOTHILLS LANE
Block 12-6	111 SONOMA LANE	Block 21-6	68 FOOTHILLS LANE
Block 12-7	113 SONOMA LANE	Block 21-7	70 FOOTHILLS LANE
Block 12-8	115 SONOMA LANE	Block 21-8	72 FOOTHILLS LANE
Block 12-9	117 SONOMA LANE		
Block 12-10	119 SONOMA LANE	Block 22-1	120 SONOMA LANE
Block 12-11	121 SONOMA LANE	Block 22-2	122 SONOMA LANE
Block 12-12	123 SONOMA LANE	Block 22-3	124 SONOMA LANE
Block 12-13	125 SONOMA LANE	Block 22-4	126 SONOMA LANE
Block 12-14	127 SONOMA LANE	Block 22-5	128 SONOMA LANE
Block 12-15	129 SONOMA LANE	Block 22-6	130 SONOMA LANE
Block 12-16	131 SONOMA LANE		
Block 19 - SWM	100 SONOMA LANE	Block 23-1	9 ZINFANDEL DRIVE
		Block 23-2	11 ZINFANDEL DRIVE
		Block 23-3	13 ZINFANDEL DRIVE
		Block 23-4	15 ZINFANDEL DRIVE
		Block 23-5	17 ZINFANDEL DRIVE
		Block 23-6	19 ZINFANDEL DRIVE
		Block 24-1	2 ZINFANDEL DRIVE
		Block 24-2	4 ZINFANDEL DRIVE
		Block 24-3	6 ZINFANDEL DRIVE
		Block 24-4	8 ZINFANDEL DRIVE
		Block 25-1	10 ZINFANDEL DRIVE
		Block 25-2	12 ZINFANDEL DRIVE
		Block 25-3	14 ZINFANDEL DRIVE
		Block 25-4	16 ZINFANDEL DRIVE
		Block 25-5	18 ZINFANDEL DRIVE
		Block 25-6	20 ZINFANDEL DRIVE
		Block 26	16 FOOTHILLS LANE
		Block 26	18 FOOTHILLS LANE
		Block 26	20 FOOTHILLS LANE
		Block 26	22 FOOTHILLS LANE
		Block 26	24 FOOTHILLS LANE
		Block 26	26 FOOTHILLS LANE
		Block 26	28 FOOTHILLS LANE
		Block 26	30 FOOTHILLS LANE

REVISED APRIL 5, 2017
BLOCK 10 ADDED

NATIONAL

CANADIAN



57 59 61 63 65
BLOCK 9

35 37 39 41 43 45 47 49
BLOCK 9

34 36 38 40 42 44
BLOCK 10

46 48 50 52 54 56
BLOCK 11

101 103 105 107 109 111
BLOCK 12

123 125 127 129 131
BLOCK 13

58 60 62 64
BLOCK 14

9 11 13 15 17 19
BLOCK 22

58 60 62 64
BLOCK 23

57 59 61 63 65 67 69 71
BLOCK 19

DIRTY PINO FACILITY
BLOCK 19

EMERGENCY SHELTER

NO PARKING

SPEED CONTROL SEE DETAIL DWG. No. 1A

DIRTY PINO FACILITY

EMERGENCY SHELTER

NO PARKING

SPEED CONTROL SEE DETAIL DWG. No. 1A

DIRTY PINO FACILITY

EMERGENCY SHELTER

NO PARKING

SPEED CONTROL SEE DETAIL DWG. No. 1A

DIRTY PINO FACILITY

EMERGENCY SHELTER

NO PARKING

SPEED CONTROL SEE DETAIL DWG. No. 1A

DIRTY PINO FACILITY

EMERGENCY SHELTER

NO PARKING

SPEED CONTROL SEE DETAIL DWG. No. 1A

DIRTY PINO FACILITY

EMERGENCY SHELTER

NO PARKING

SPEED CONTROL SEE DETAIL DWG. No. 1A

DIRTY PINO FACILITY

EMERGENCY SHELTER

NO PARKING

SPEED CONTROL SEE DETAIL DWG. No. 1A

DIRTY PINO FACILITY

EMERGENCY SHELTER

NO PARKING

SPEED CONTROL SEE DETAIL DWG. No. 1A

DIRTY PINO FACILITY

EMERGENCY SHELTER

NO PARKING

SPEED CONTROL SEE DETAIL DWG. No. 1A

DIRTY PINO FACILITY

EMERGENCY SHELTER

NO PARKING

SPEED CONTROL SEE DETAIL DWG. No. 1A

DIRTY PINO FACILITY

EMERGENCY SHELTER

NO PARKING

SPEED CONTROL SEE DETAIL DWG. No. 1A

DIRTY PINO FACILITY

EMERGENCY SHELTER

NO PARKING

SPEED CONTROL SEE DETAIL DWG. No. 1A

DIRTY PINO FACILITY

EMERGENCY SHELTER

NO PARKING

SPEED CONTROL SEE DETAIL DWG. No. 1A

DIRTY PINO FACILITY

EMERGENCY SHELTER

NO PARKING

SPEED CONTROL SEE DETAIL DWG. No. 1A

DIRTY PINO FACILITY

EMERGENCY SHELTER

NO PARKING

SPEED CONTROL SEE DETAIL DWG. No. 1A

DIRTY PINO FACILITY

EMERGENCY SHELTER

NO PARKING

SPEED CONTROL SEE DETAIL DWG. No. 1A

DIRTY PINO FACILITY

EMERGENCY SHELTER

NO PARKING

SPEED CONTROL SEE DETAIL DWG. No. 1A

DIRTY PINO FACILITY

EMERGENCY SHELTER

NO PARKING

SPEED CONTROL SEE DETAIL DWG. No. 1A

DIRTY PINO FACILITY

EMERGENCY SHELTER

NO PARKING

SPEED CONTROL SEE DETAIL DWG. No. 1A

DIRTY PINO FACILITY

EMERGENCY SHELTER

NO PARKING

SPEED CONTROL SEE DETAIL DWG. No. 1A

DIRTY PINO FACILITY

EMERGENCY SHELTER

NO PARKING

SPEED CONTROL SEE DETAIL DWG. No. 1A

DIRTY PINO FACILITY

EMERGENCY SHELTER

NO PARKING

SPEED CONTROL SEE DETAIL DWG. No. 1A

DIRTY PINO FACILITY

EMERGENCY SHELTER

NO PARKING

SPEED CONTROL SEE DETAIL DWG. No. 1A

DIRTY PINO FACILITY

EMERGENCY SHELTER

NO PARKING

SPEED CONTROL SEE DETAIL DWG. No. 1A

DIRTY PINO FACILITY

EMERGENCY SHELTER

NO PARKING

SPEED CONTROL SEE DETAIL DWG. No. 1A

DIRTY PINO FACILITY

EMERGENCY SHELTER

NO PARKING

SPEED CONTROL SEE DETAIL DWG. No. 1A

DIRTY PINO FACILITY

EMERGENCY SHELTER

NO PARKING

SPEED CONTROL SEE DETAIL DWG. No. 1A

DIRTY PINO FACILITY

EMERGENCY SHELTER

NO PARKING

SPEED CONTROL SEE DETAIL DWG. No. 1A

DIRTY PINO FACILITY

EMERGENCY SHELTER

NO PARKING

SPEED CONTROL SEE DETAIL DWG. No. 1A

DIRTY PINO FACILITY

EMERGENCY SHELTER

NO PARKING

SPEED CONTROL SEE DETAIL DWG. No. 1A

DIRTY PINO FACILITY

EMERGENCY SHELTER

NO PARKING

SPEED CONTROL SEE DETAIL DWG. No. 1A

DIRTY PINO FACILITY

EMERGENCY SHELTER

NO PARKING

SPEED CONTROL SEE DETAIL DWG. No. 1A

DIRTY PINO FACILITY

EMERGENCY SHELTER

NO PARKING

SPEED CONTROL SEE DETAIL DWG. No. 1A

DIRTY PINO FACILITY

EMERGENCY SHELTER

NO PARKING

SPEED CONTROL SEE DETAIL DWG. No. 1A

DIRTY PINO FACILITY

EMERGENCY SHELTER

NO PARKING

SPEED CONTROL SEE DETAIL DWG. No. 1A

DIRTY PINO FACILITY

EMERGENCY SHELTER

NO PARKING

SPEED CONTROL SEE DETAIL DWG. No. 1A

DIRTY PINO FACILITY

EMERGENCY SHELTER

NO PARKING

SPEED CONTROL SEE DETAIL DWG. No. 1A

DIRTY PINO FACILITY

EMERGENCY SHELTER

NO PARKING

SPEED CONTROL SEE DETAIL DWG. No. 1A

DIRTY PINO FACILITY

EMERGENCY SHELTER

NO PARKING

SPEED CONTROL SEE DETAIL DWG. No. 1A

DIRTY PINO FACILITY

EMERGENCY SHELTER

NO PARKING

SPEED CONTROL SEE DETAIL DWG. No. 1A

DIRTY PINO FACILITY

EMERGENCY SHELTER

NO PARKING

SPEED CONTROL SEE DETAIL DWG. No. 1A

DIRTY PINO FACILITY

EMERGENCY SHELTER

NO PARKING

SPEED CONTROL SEE DETAIL DWG. No. 1A

DIRTY PINO FACILITY

EMERGENCY SHELTER

NO PARKING

SPEED CONTROL SEE DETAIL DWG. No. 1A

DIRTY PINO FACILITY

EMERGENCY SHELTER

NO PARKING

SPEED CONTROL SEE DETAIL DWG. No. 1A

DIRTY PINO FACILITY

EMERGENCY SHELTER

NO PARKING

SPEED CONTROL SEE DETAIL DWG. No. 1A

DIRTY PINO FACILITY

EMERGENCY SHELTER

NO PARKING

SPEED CONTROL SEE DETAIL DWG. No. 1A

DIRTY PINO FACILITY

EMERGENCY SHELTER

NO PARKING

SPEED CONTROL SEE DETAIL DWG. No. 1A

DIRTY PINO FACILITY

EMERGENCY SHELTER

NO PARKING

SPEED CONTROL SEE DETAIL DWG. No. 1A

DIRTY PINO FACILITY

EMERGENCY SHELTER

NO PARKING

SPEED CONTROL SEE DETAIL DWG. No. 1A

DIRTY PINO FACILITY

EMERGENCY SHELTER

NO PARKING

SPEED CONTROL SEE DETAIL DWG. No. 1A

DIRTY PINO FACILITY

EMERGENCY SHELTER

NO PARKING

SPEED CONTROL SEE DETAIL DWG. No. 1A

DIRTY PINO FACILITY

EMERGENCY SHELTER

NO PARKING

SPEED CONTROL SEE DETAIL DWG. No. 1A

DIRTY PINO FACILITY

EMERGENCY SHELTER

NO PARKING

SPEED CONTROL SEE DETAIL DWG. No. 1A

DIRTY PINO FACILITY

EMERGENCY SHELTER

NO PARKING

SPEED CONTROL SEE DETAIL DWG. No. 1A

DIRTY PINO FACILITY

EMERGENCY SHELTER

NO PARKING

SPEED CONTROL SEE DETAIL DWG. No. 1A

DIRTY PINO FACILITY

EMERGENCY SHELTER

NO PARKING

SPEED CONTROL SEE DETAIL DWG. No. 1A

DIRTY PINO FACILITY

EMERGENCY SHELTER

NO PARKING

SPEED CONTROL SEE DETAIL DWG. No. 1A

DIRTY PINO FACILITY

EMERGENCY SHELTER

NO PARKING

SPEED CONTROL SEE DETAIL DWG. No. 1A

DIRTY PINO FACILITY

EMERGENCY SHELTER

NO PARKING

SPEED CONTROL SEE DETAIL DWG. No. 1A

DIRTY PINO FACILITY

EMERGENCY SHELTER

NO PARKING

SPEED CONTROL SEE DETAIL DWG. No. 1A

DIRTY PINO FACILITY

EMERGENCY SHELTER

NO PARKING

SPEED CONTROL SEE DETAIL DWG. No. 1A

DIRTY PINO FACILITY

EMERGENCY SHELTER

NO PARKING

SPEED CONTROL SEE DETAIL DWG. No. 1A

DIRTY PINO FACILITY

EMERGENCY SHELTER

NO PARKING

SPEED CONTROL SEE DETAIL DWG. No. 1A

DIRTY PINO FACILITY

EMERGENCY SHELTER

NO PARKING

SPEED CONTROL SEE DETAIL DWG. No. 1A

DIRTY PINO FACILITY

EMERGENCY SHELTER

NO PARKING

SPEED CONTROL SEE DETAIL DWG. No. 1A