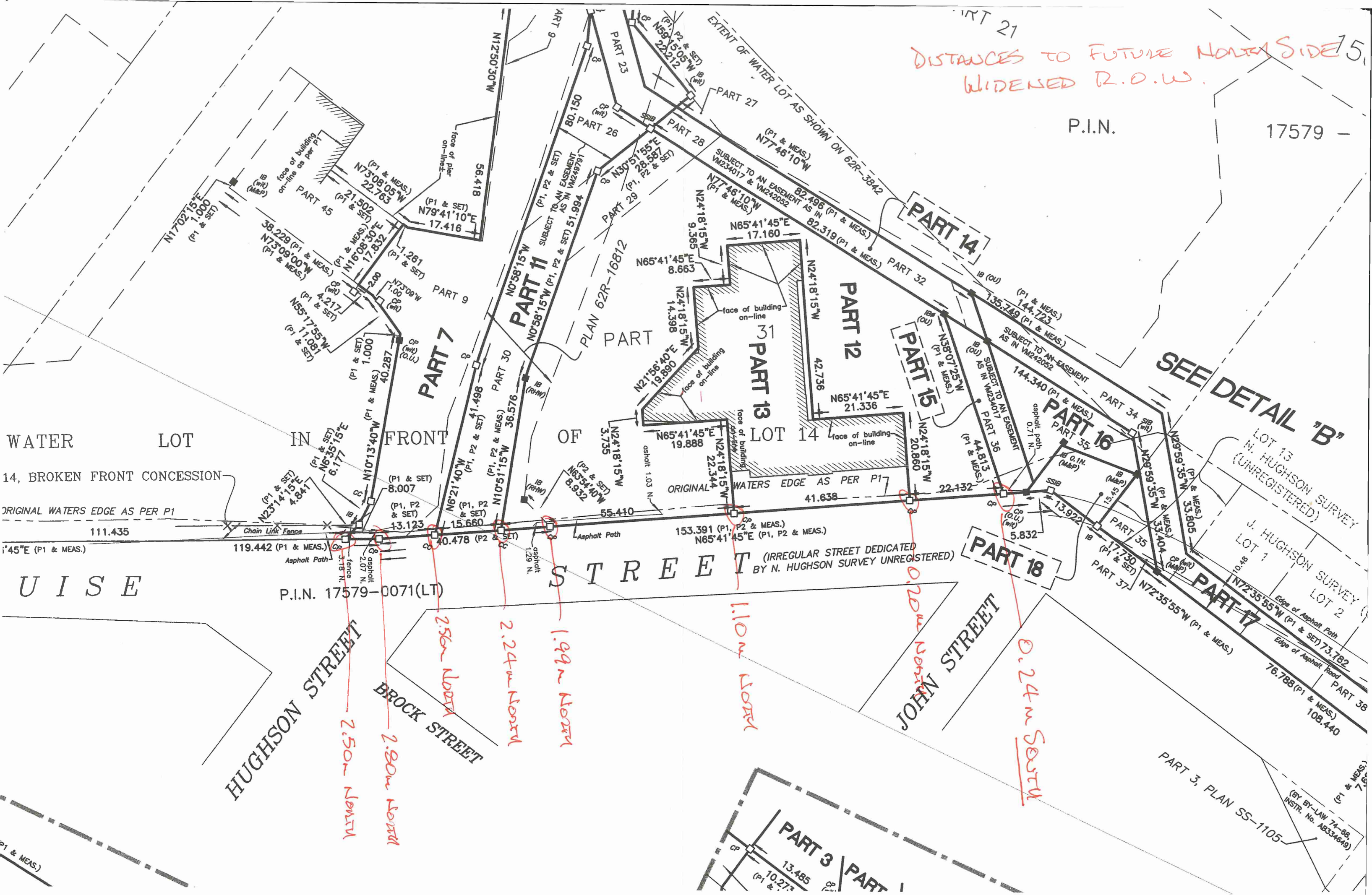


DISTANCES TO FUTURE NORTH SIDE WIDENED R.O.W.

P.I.N. 17579



SEE DETAIL 'B'

LOT 13 N. HUGHSON SURVEY (UNREGISTERED)
J. HUGHSON SURVEY LOT 2
Edge of Asphalt Road
Edge of Asphalt Path

PART 3, PLAN SS-1105

(IRREGULAR STREET DEDICATED BY N. HUGHSON SURVEY UNREGISTERED)

HUGHSON STREET
BROCK STREET

JOHN STREET

2.56m North
2.24m North
1.99m North
1.10m North
0.20m North
0.24m South

P.I.N. 17579-0071(LT)

WATER LOT IN FRONT OF

14, BROKEN FRONT CONCESSION

ORIGINAL WATERS EDGE AS PER P1

UISE

PART 3 PART
13.485
10.273

(BY BY-LAW 74-88 INSTR. No. AB334649)