

Bill No. 170

**CITY OF HAMILTON
BY-LAW NO. 04-170
TO INCORPORATE CITY LAND
DESIGNATED AS PARTS 1 AND 2 ON PLAN 62R-16761
INTO PRITCHARD ROAD**

WHEREAS the Council of the City of Hamilton is empowered under Section 31(1) of The Municipal Act, 2001, Chapter 25 and amendments thereto, to establish and lay out, widen, alter, divert, stop-up, lease or sell any highway or part of a highway.

AND WHEREAS the Council of the City of Hamilton deems it necessary to incorporate the land described below into the highway known as Pritchard Road within its limits;

AND WHEREAS the said land is owned by the City of Hamilton.

NOW THEREFORE the Council of the City of Hamilton enacts as follows:

1. That the following land is hereby established and laid out as a public highway to form part of Pritchard Road.

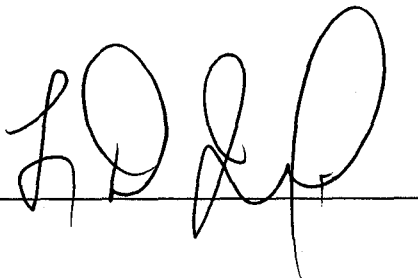
Part of Lot 34, Concession 8 in the Geographic Township of Saltfleet, now in the City of Hamilton. Designated as Parts 1 and 2 on Plan 62R-16761.

City of Hamilton

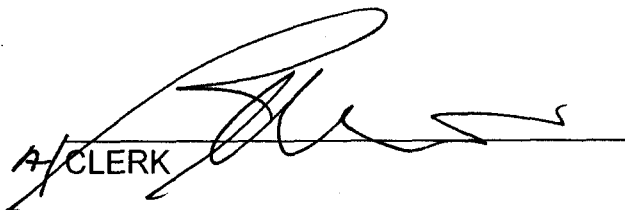
2. That the General Manager of Public Works or his duly authorized agent is hereby authorized to open the said land as a public highway.
3. That this by-law comes into force and takes effect on the date of its registration in the Land Registry Office (No. 62).

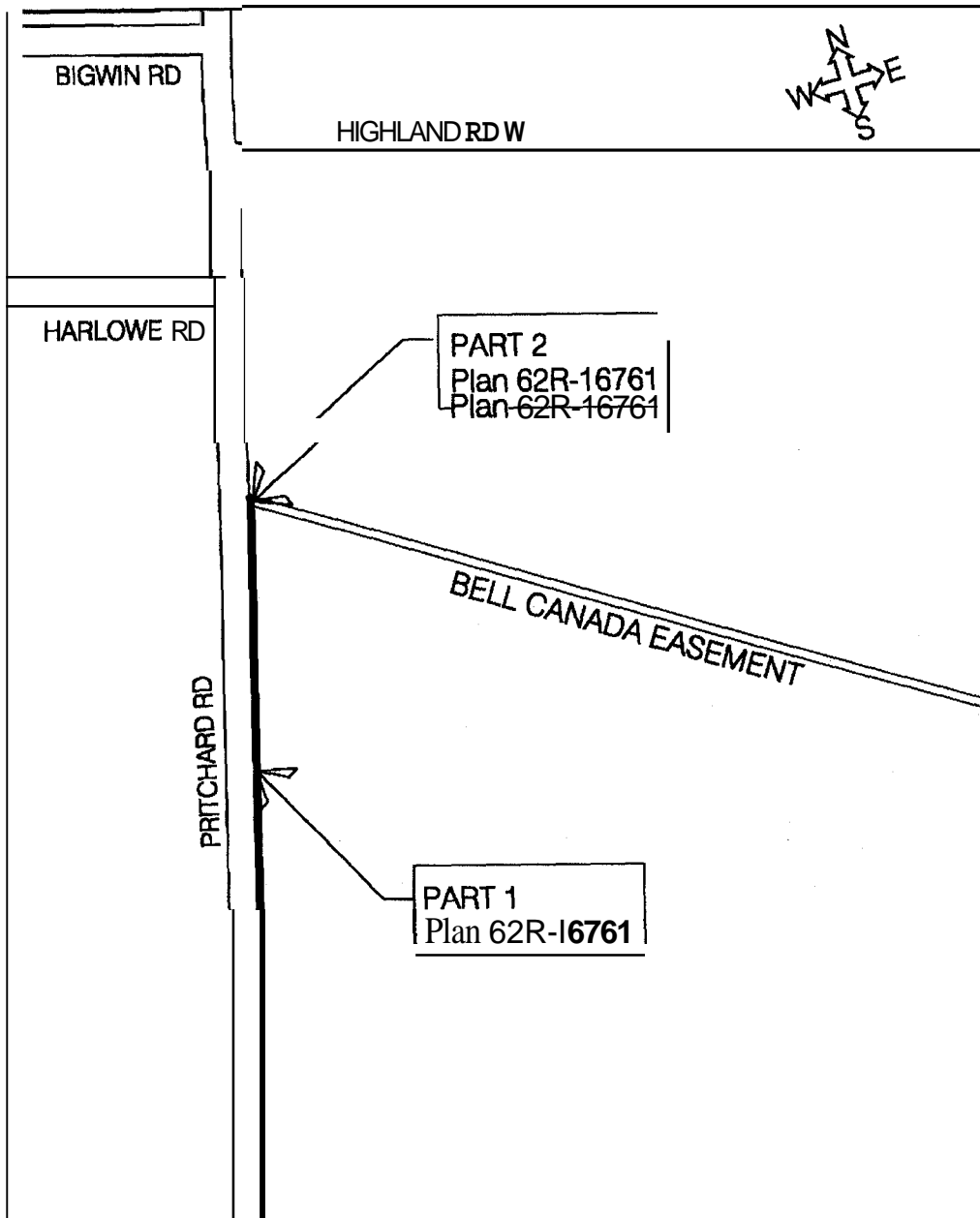
PASSED and ENACTED this 14th day of July, 2004

MAYOR



A/CLERK





<p>City of Hamilton Ward Number 6 Pritchard Road By-law</p>	<p>CITY OF HAMILTON Public Works Department General Manager, Peter M. Crockett, P.Eng. DATE: June, 2004 N.T.S</p>
--	--