

# PLAY YOUR WAY - HENRY & BEATRICE WARDEN PARK PUBLIC ENGAGEMENT SUMMARY

Between September 1 and September 22, 2021, the City offered a survey to the public to provide their feedback regarding the upcoming playground replacement at Henry & Beatrice Warden Park. The survey provided images of various playground components, which were grouped into their respective categories, allowing respondents to select their top 2 choices for each. Additionally, written responses were received, which contained feedback and information regarding the demographics of survey respondents. These written responses will be considered in both the Henry & Beatrice Warden Park playground design, and for the continuous improvement of our playground replacement projects throughout the City.

City staff are currently in the process of completing the new playground design and will be incorporating the feedback received from the survey. The design is expected to be finalized in 2021 and will be shared on the project website [www.hamilton.ca/playourway](http://www.hamilton.ca/playourway) once available. We encourage you to check back regularly to stay up-to-date on important project updates.

Here are the top choices for each category of the survey for the new Henry & Beatrice Warden Park playground:

## Playground Style Options:

**First Choice:** Hybrid Playground Style 1



**Second Choice:** Hybrid Playground Style 3



*Final equipment selection and installation may vary from what is shown here. Community feedback will help to guide the design of the future play structure, and include elements similar to the examples shown in the survey.*

**Continued ...**

If you have any questions, please contact  
City of Hamilton Parks staff at:  
[playourway@hamilton.ca](mailto:playourway@hamilton.ca)



# PLAY YOUR WAY - HENRY & BEATRICE WARDEN PARK PUBLIC ENGAGEMENT SUMMARY

## Slide Options:

First Choice: Roller Slide



Second Choice: Double/Triple Slide



## Climbing Ladder Options:

First Choice: Rock Climber



Second Choice: Log Climber

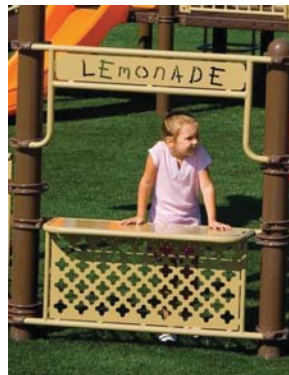


## Activity Panel Options:

First Choice: Interactive Panel

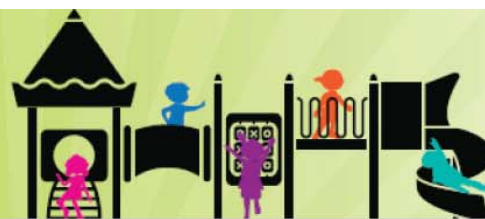


Second Choice: Store Counter Panel



Continued ...

If you have any questions, please contact  
City of Hamilton Parks staff at:  
[playyourway@hamilton.ca](mailto:playyourway@hamilton.ca)





# PLAY YOUR WAY - HENRY & BEATRICE WARDEN PARK PUBLIC ENGAGEMENT SUMMARY

## Obstacle Course Options:

First Choice: Circuit Climber 2



Second Choice: Net Climber



## Roof & Seating Options:

First Choice: Sheltered Seating



Second Choice: Tree Post Tops



## Stand Alone Feature Options:

First Choice: Track Ride



Second Choice: Spinning Roper Climber



Continued ...

If you have any questions, please contact  
City of Hamilton Parks staff at:  
[playyourway@hamilton.ca](mailto:playyourway@hamilton.ca)



# PLAY YOUR WAY - HENRY & BEATRICE WARDEN PARK PUBLIC ENGAGEMENT SUMMARY

## Music Options:

First Choice: Xylophone



Second Choice: Bongos



If you have any questions, please contact  
City of Hamilton Parks staff at:  
[playyourway@hamilton.ca](mailto:playyourway@hamilton.ca)

