

Shaver Estates Park

Plant & Wildlife Surveys to Determine Existing Conditions

Work Completed to Date

- Terrestrial Characterization
(Plants & Plant Communities)
 - Vegetation Community Delineation
 - Vascular Plant Species & Status List

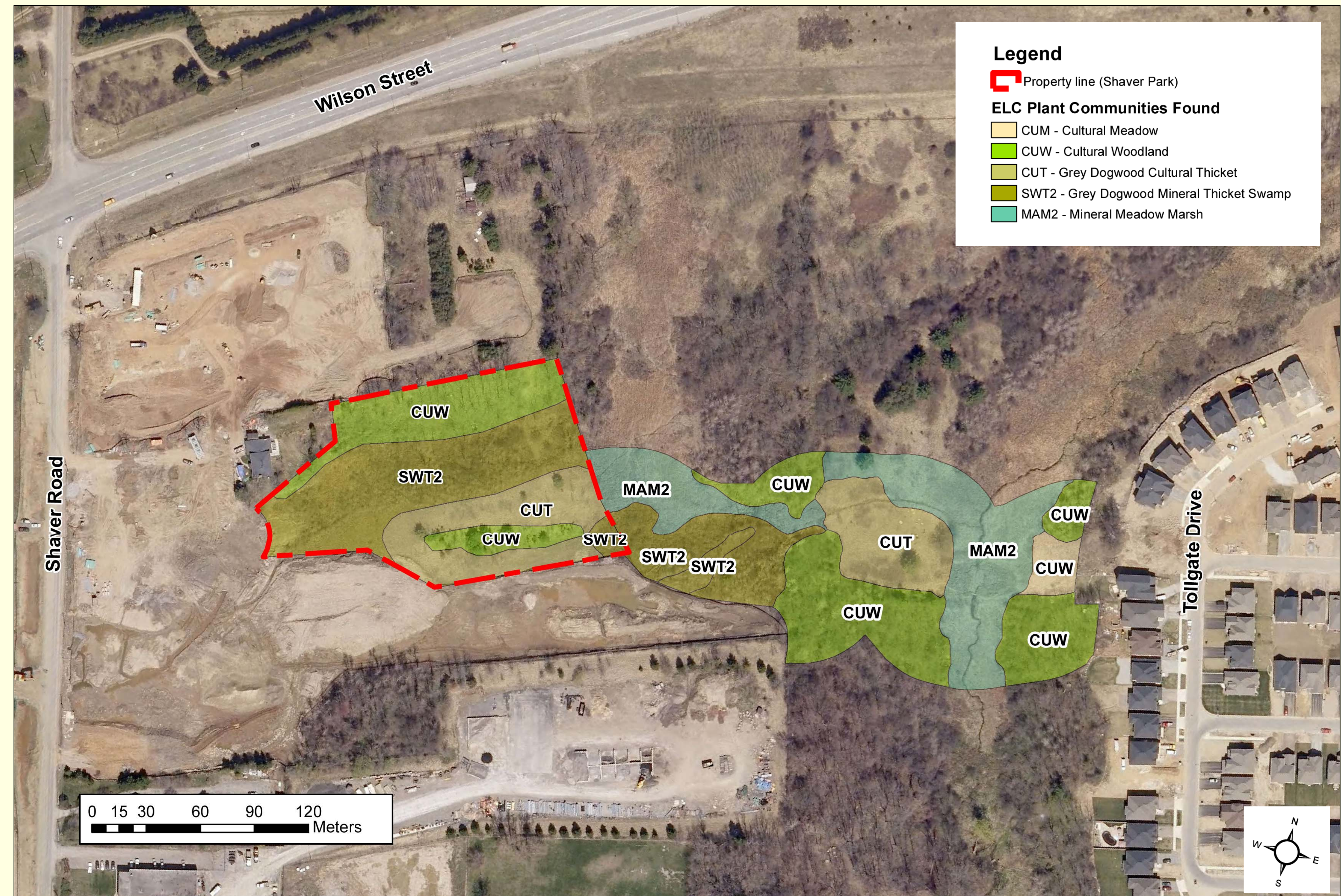
Work to be Completed in 2011

- Completion of Terrestrial Characterization
 - Spring wildflower survey & confirmation of fall findings
- Wildlife Surveys
 - Breeding Bird Survey
 - Amphibian Call Surveys

Vegetation Findings

Vegetation community delineation conducted using the Ecological Land Classification (ELC) System.

- 5 ELC communities found
 - Cultural meadow
 - Cultural woodland
 - Grey dogwood cultural thicket
 - Mineral thicket swamp
 - Mineral meadow marsh
- 127 plant species found
 - 84 (66%) native
 - 28 (22%) introduced
 - 15 (12%) identified to genus level only
 - 2 locally significant species found:
 - Fringed Gentian (*Gentianopsis crinita*)
 - Virginia Mountain-Mint (*Pycnanthemum virginianum*)



NOTE: Air photo imagery taken in 2006, obtained with permission from Grand River Conservation Authority. Air photos are under License with the Grand River Conservation Authority, © Grand River Conservation Authority, 2011. Ground conditions have changed since air photo was taken.